

Human Kidney Organoid Differentiation Medium Kit | Cat. No. TM209

Reproducible Kidney Organoids For Translational Discovery

Human Kidney Organoid Differentiation Medium Kit

This kit provides optimized media and supplements to support the efficient and reproducible differentiation of human pluripotent stem cells into 3D kidney organoids. The resulting organoids contain multiple renal cell populations and self-organize into nephron-like structures, enabling renal development, disease modeling, drug screening, and nephrotoxicity studies.

Product Highlights

- ✓ qPCR & IHC Validated
- ✓ Metabolic Functionality
- ✓ Multi-lineage Renal Cell Populations
- ✓ Lot Consistency

Key Applications

- ✓ Nephrotoxicity Screening
- ✓ Drug Screening & Discovery
- ✓ Disease Modelling
- ✓ Regenerative Medicine

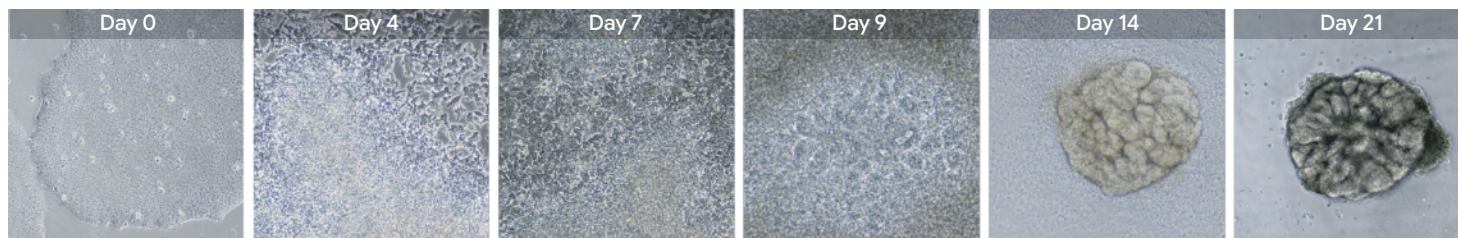
Learn more about abm's kidney organoid workflow at:

www.abmgood.com/human-kidney-organoid-differentiation-media-kit-tm209.html

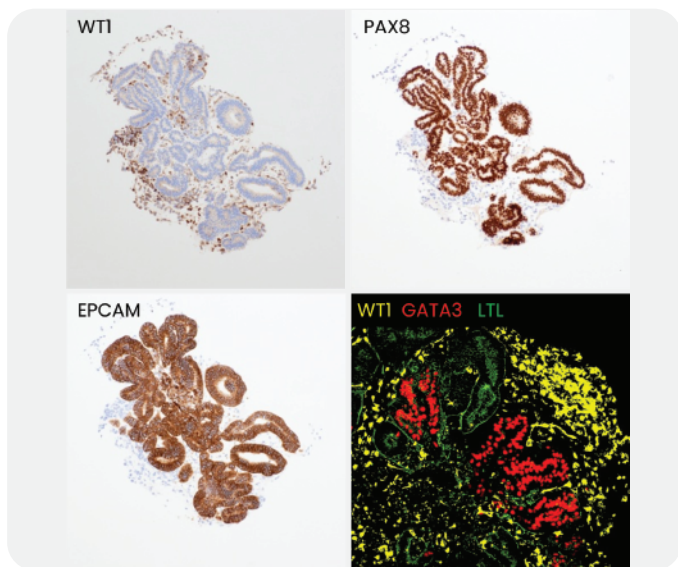


Explore more

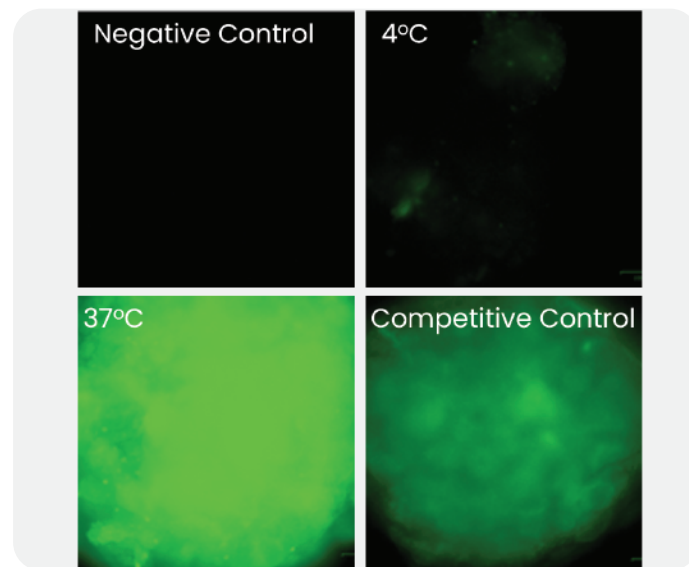
Validation Data - Human Kidney Organoids



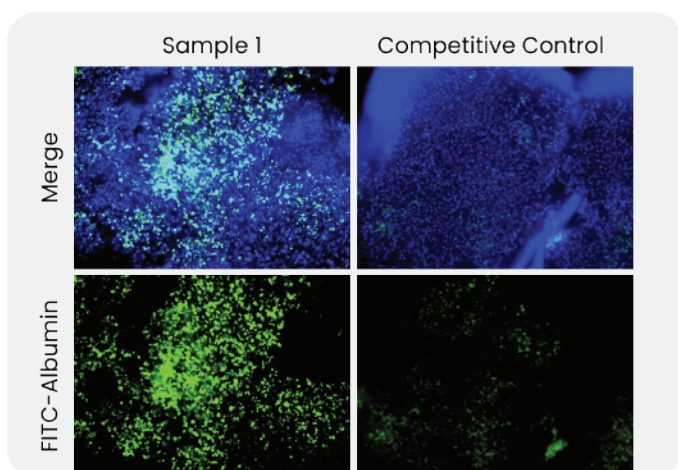
Representative bright-field images showing the progression of embryonic stem cells (ESCs) from compact colonies through early differentiation and three-dimensional aggregation to mature kidney organoid-like structures with complex architecture, consistent with successful kidney organoid formation.



Kidney organoid characterization by IHC and immunofluorescence. Representative staining of kidney organoids showing renal lineage markers WT1, PAX8, EPCAM, GATA3, and LTL, confirming podocyte, epithelial, collecting duct, and proximal tubule-like structures consistent with mature kidney organoid architecture.



2-NBDG glucose uptake assay in kidney organoids. Representative 2-NBDG assay measuring glucose uptake in kidney organoids. Controls included no dye background normalization, 4°C incubation for minimal transporter activity, and competitive inhibition with unlabeled D-glucose, while the 37°C testing sample assessed active glucose uptake and metabolic function.



Albumin uptake assay in kidney organoids. FITC-albumin uptake in kidney organoids. The no dye control normalized background, the competitive control used excess unlabeled BSA (100x), and the 37°C sample assessed active uptake and proximal tubule function.

Ordering Information

Cat. No.	Product Name
TM209	Human Kidney Organoid Differentiation Medium Kit
TM210	Human Kidney Organoid Maintenance Medium
TM076	3DCelMatrix™
TM097	StemRelease™
TM131	Y-27632 (ROCK Inhibitor)
TM078	CryoGuard™ Freezing Media
G7540	SpheroWell™ 96-well plates
G7541	SpheroWell™ 6-well plates
G7542	SpheroWell™ 10-cm plates